

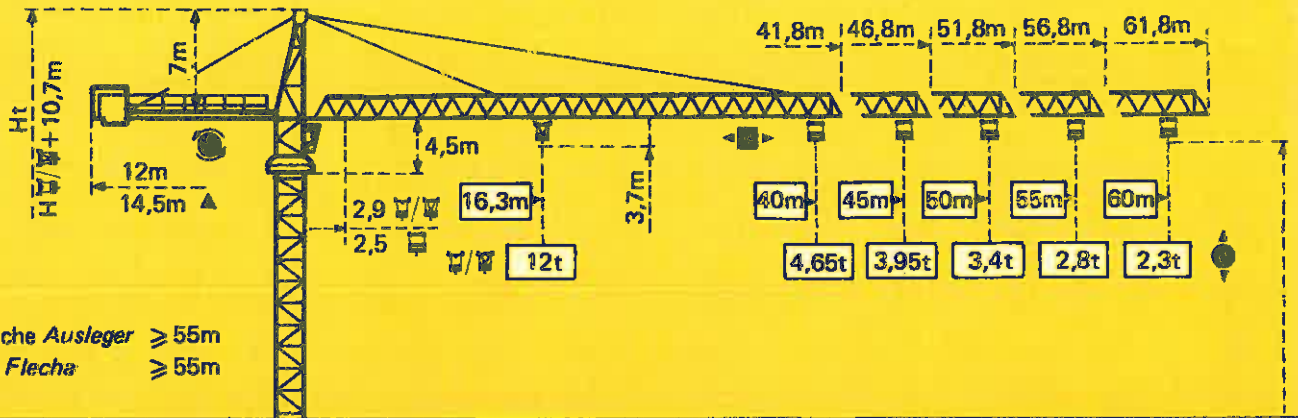
---

**TOPKIT H30 / 23C**

---

**POTAIN** 

Para más detalles consulte las publicaciones reservadas



▲ Flèche Ausleger  $\geq 55m$   
▲ Jib Flecha  $\geq 55m$

Mâture Mast Mast Mástil

1,6m x 1,6m

Mâture Mast Mast Mástil

2m x 2m

PA 481

SB 481

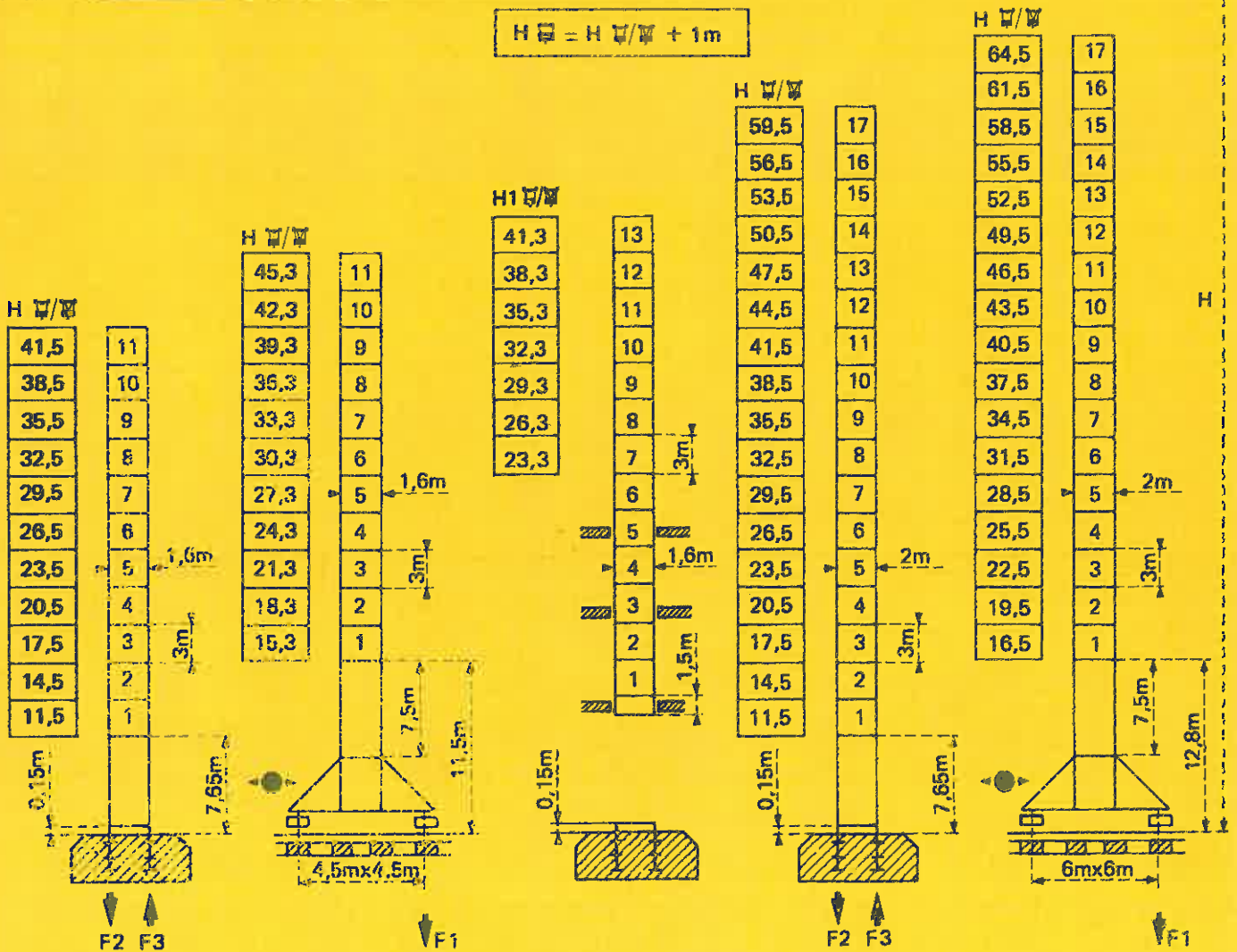
BA45A\*

PA 663

VB 663

Flèche Ausleger Jib Flecha  $\leq 55m$

$$H_{\text{tot}} = H_{\text{Hw/2}} + 1m$$



F = Réactions Eckdrucke Reactions Reacciones

F2	● 108t	■ 87t
F3	● 70t	■ 54t
	47t	

F1	● 71t	■ 65t
	55t	

Voir ci-contre \*  
Siehe nebenstehend  
See opposite  
Ver página opuesta

F2	● 121t	■ 182t
F3	● 72t	■ 120t
	85t	

F1	● 89t	■ 110t
	98t	

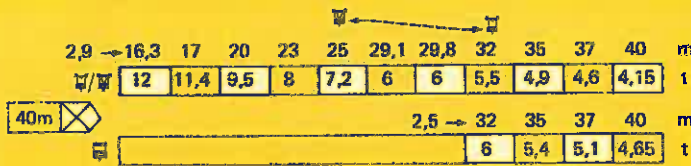
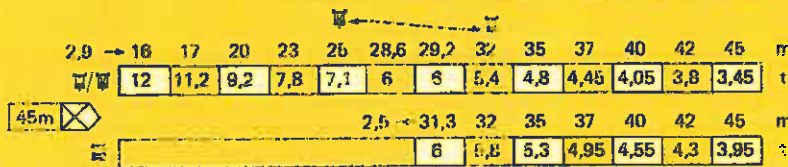
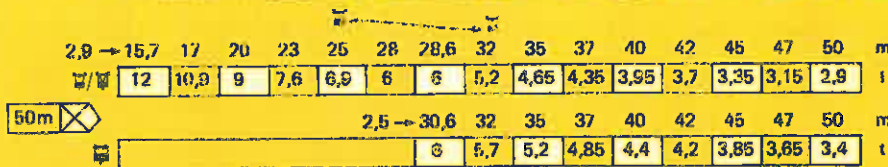
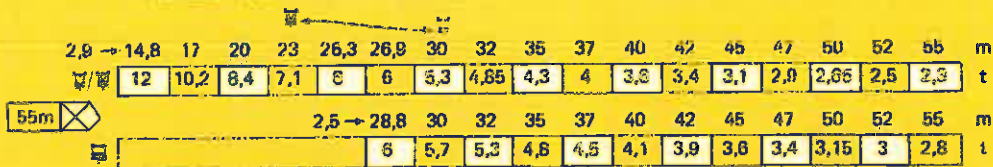
Courbes de charges

Lastkurven

Load diagrams

Curvas de cargas

Flèche Ausleger Jib Flecha



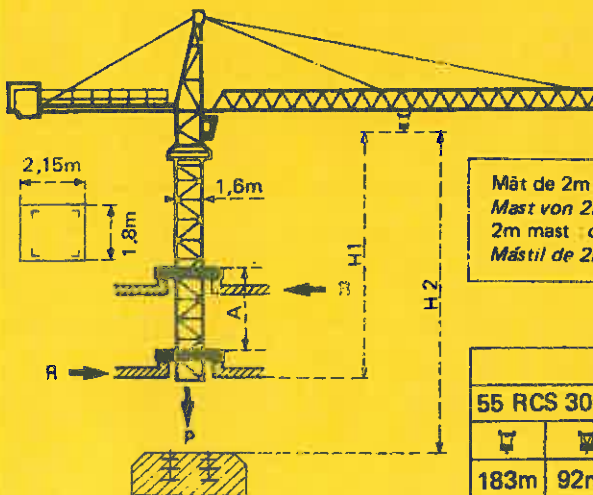
Chariot standard 2/4 brins (En cas d'utilisation déduire 0,1 t aux charges )  
 Chariot optionnel 2 brins uniquement

Standardlaufkatze 2/4 Stränge (Bei Einsatz von ist 0,1 t der Lasten von abzuziehen)  
 Laufkatze in Sonderausführung mit nur 2 Strängen

Standard trolley 2/4 fall (When using subtract 0.1t from the loads )  
 Optional trolley fall only

Carro standard 2/4 ramales (En caso de utilización quitar 0,1 t de las cargas )  
 Carro opcional en 2 ramales solamente

Télescopage sur dalles - Ketterkrane im Gebäude  
 Climbing crane - Telecopage gruas trepadoras



Mât de 2m - nous consulter  
 Mast von 2m - Auf Anfrage  
 2m mast - consult us  
 Mástil de 2m - consultarnos

H2			
55 RCS 30C	33 PC 30C		
183m	92m	204m	102m

A Distance entre cadres  
 H1 Hauteur grue  
 P Poids de la grue (En service)  
 R Réaction horizontale

A Abstand zwischen den Rahmen  
 H1 Kranhöhe  
 P Krangewicht (In Betrieb)  
 R Horizontalkräfte

A Distance between collars  
 H1 Crane height  
 P Crane weight (In service)  
 R Horizontal reaction

A Distancia entre marcos  
 H1 Altura grúa  
 P Peso de la grúa (En servicio)  
 R Reacción horizontal

● En service  
 ■ Hors service

● In Betrieb  
 ■ Ausser Betrieb

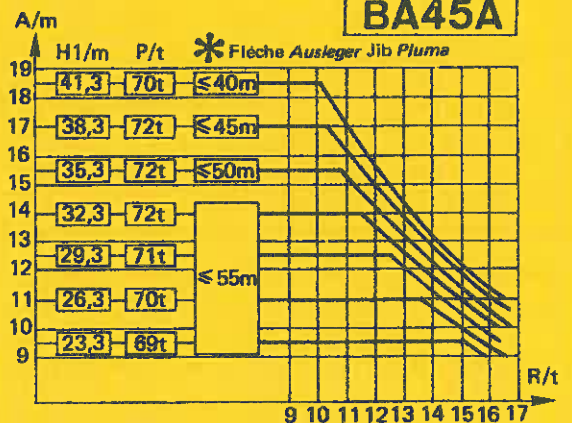
● In service  
 ■ Out of service

● En servicio  
 ■ Fuera de servicio



















A vide sans lest avec flèche et hauteur maximum.  
 Ohne Last und Ballast mit Maximalausleger und Maximalhöhe.

Without load and ballast with longest jib and maximum height

Sin cargas, sin lastre con flecha y altura máxima





\* Contre-flèche 14,5m impérative pour toute version en BA45A  
 Eine Gegenauslegerlänge von 14,5m ist für jede Auslegerausführung bei BA45A unbedingt erforderlich  
 It is essential to have a counter-jib of 14.5 m for all jib versions in case of BA45A  
 Contra flecha 14,5m longitud imperativa para toda versión de flecha en BA45A

					m/min	t		ch-PS hp	kW	
Levage Heben Hoisting Elevación	Treuil standard Standardhubwerk Standard hoist winch Mecanismo standard	55 RCS 30C 			0 → 34	6	365m > 365m	55	40,5	
					0 → 69	3				
					0 → 17	12				
					0 → 34	6				
	Treuil optionnel Wahlweises Hubwerk Optional winch Mecanismo opcional	33 PC 30C 			3,5	6		408m > 408m *	33	24
					19	6				
					38	3				
					1,75	12				
				9,5	12					
				19	6					

Distribution - Katzfahren Trolleying - Distribución		6 DPC 4	7,5 30 60				6	4,4
--	---	---------	-----------------	--	--	--	---	-----

Orientation - Schwenken Slewing - Orientación		OMD 55	0 → 0,7 tr/min U/min-rpm				2 x 8	2 x 5,9
--	--	--------	--------------------------------	--	--	--	-------	---------

Translation Kranfahren Travelling Traslación	SB 481  R ≥ 10m VB 663  R ≥ 13m	RT 324	12,5 - 25				2 x 7	2 x 5,2
		RC 446 ARC H ≤ 33,3m	10 - 50				4 x 6,8	4 x 5
		RT 443 A1 2V	15 - 30				4 x 5	4 x 3,7
		RC 646 ARC H ≤ 43,5m	10 - 50				4 x 6,8	4 x 5

Réseau - Netzstrom - Mains supply - Red	380 V · 50 HZ
Puissance électrique nécessaire - Anschlusswert - Necessary electric power - Potencia electrica necesaria	RCS : 70 kVA
Groupe électrogène - Stromaggregat - Generator set - Grupo electrogeno	*


\*Nous consulter - Auf Anfrage - Consult us - Consultarnos

NF E52081 - 82

# POTAIN

18, rue de Charbonnières B P 173 - F 69132 ECULLY Cedex  
Tél. (7) 833.81.81 - Télex 330 125 F

POTAIN GmbH - D 6082 MÖRFELDEN WALLDORF  
Nordendstr. 79-87 - Postfach 420 - Tel. 06105 704.0 - Telex 4.185745  
POTAIN SUISSE S.A. - CH 5115 MÖRIKEN WILDEGG  
Tel. 64.53.19.91 - Telex 981406



**TOPKIT H30/23C**

Réf. 8513 KNO 2